

The background of the slide features a close-up of a cow's head, specifically its eye and snout area, which is partially obscured by a blue overlay. Overlaid on the left side of the image are white binary code (0s and 1s) and stylized white circuit lines that suggest a digital or technological theme.

Artificial Insemination Intelligence

Kieran FitzGerald

Vice President Digital Services, DeLaval



A close-up photograph of a person's hand holding a small, round, green moss ball. The background is a soft-focus green landscape with sunlight filtering through the trees, creating a bokeh effect. The hand is positioned on the left side of the frame, with the palm facing upwards and the fingers slightly curled around the moss ball.

**We make
sustainable
food production
possible**

A large group of approximately 20 people, including men, women, and children, are posed for a group photo in a dairy farm setting. They are standing in a dirt aisle between rows of metal stalls, many of which contain black and white cows. The group is dressed in a mix of casual and work attire, with several individuals wearing blue DeLaval-branded jumpsuits or shirts. The entire image is overlaid with a semi-transparent blue filter. The text 'The Team Around the Farm' is centered over the group in a large, white, sans-serif font.

The Team Around the Farm

Sales in
>100
countries

Training centres
14

Patents
1,800+

Net sales 2024
€1.3
billion

R&D
centres
7

Factories and
distribution
centres
18

Number of
employees
4,813*

FTE (full time employees)
including adjacent businesses

**Milk contains
18/22 nutrients
needed**

Protein
(high quality)

Carbohydrates
(lactose)

Fat

Minerals

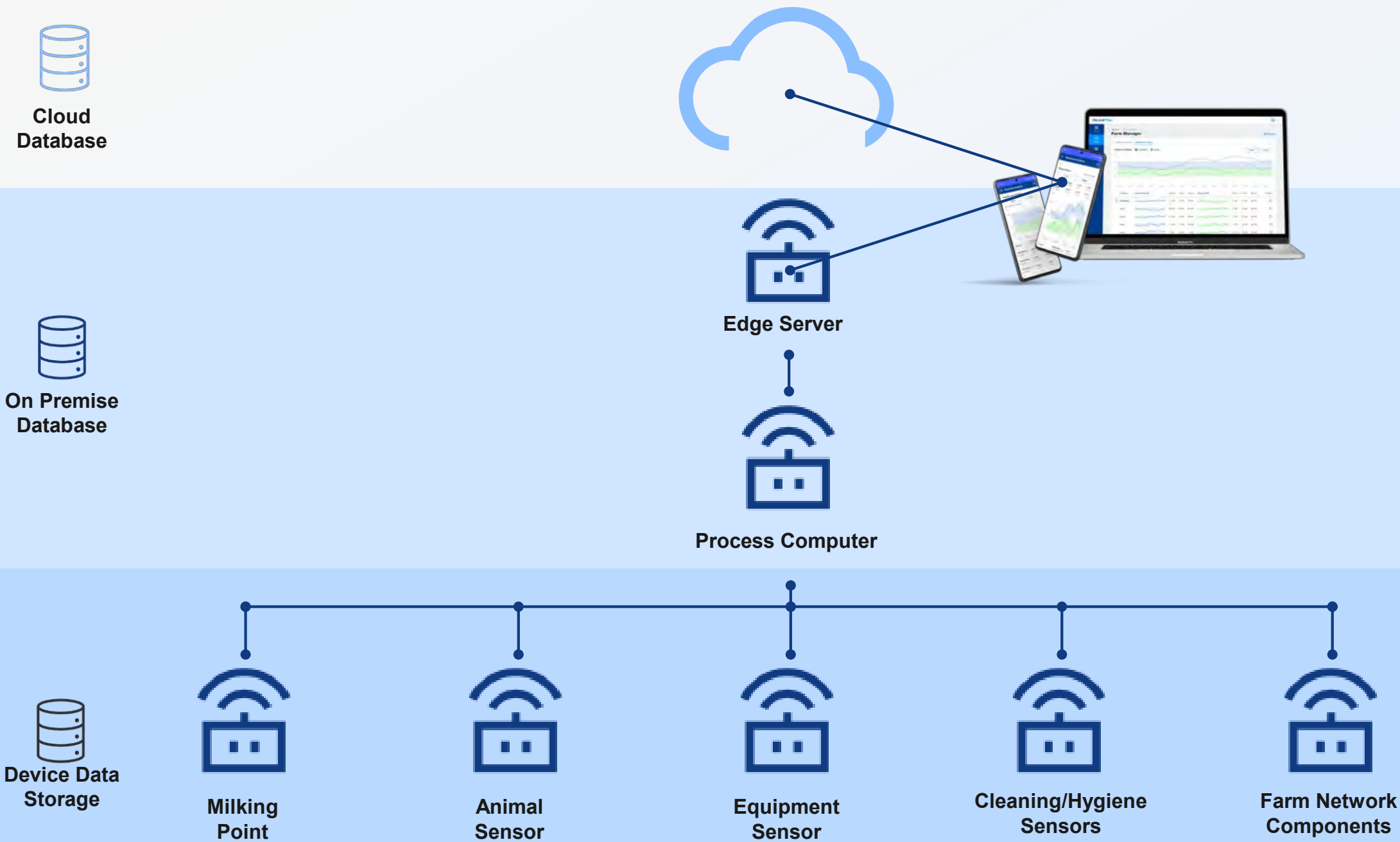
Phosphorous
Iodine
Calcium
Potassium
Magnesium
Selenium
Zinc

Vitamins

Folate
Niacin
Riboflavin
Thiamin
Vitamin A
Vitamin D
Vitamin B12
Vitamin B6





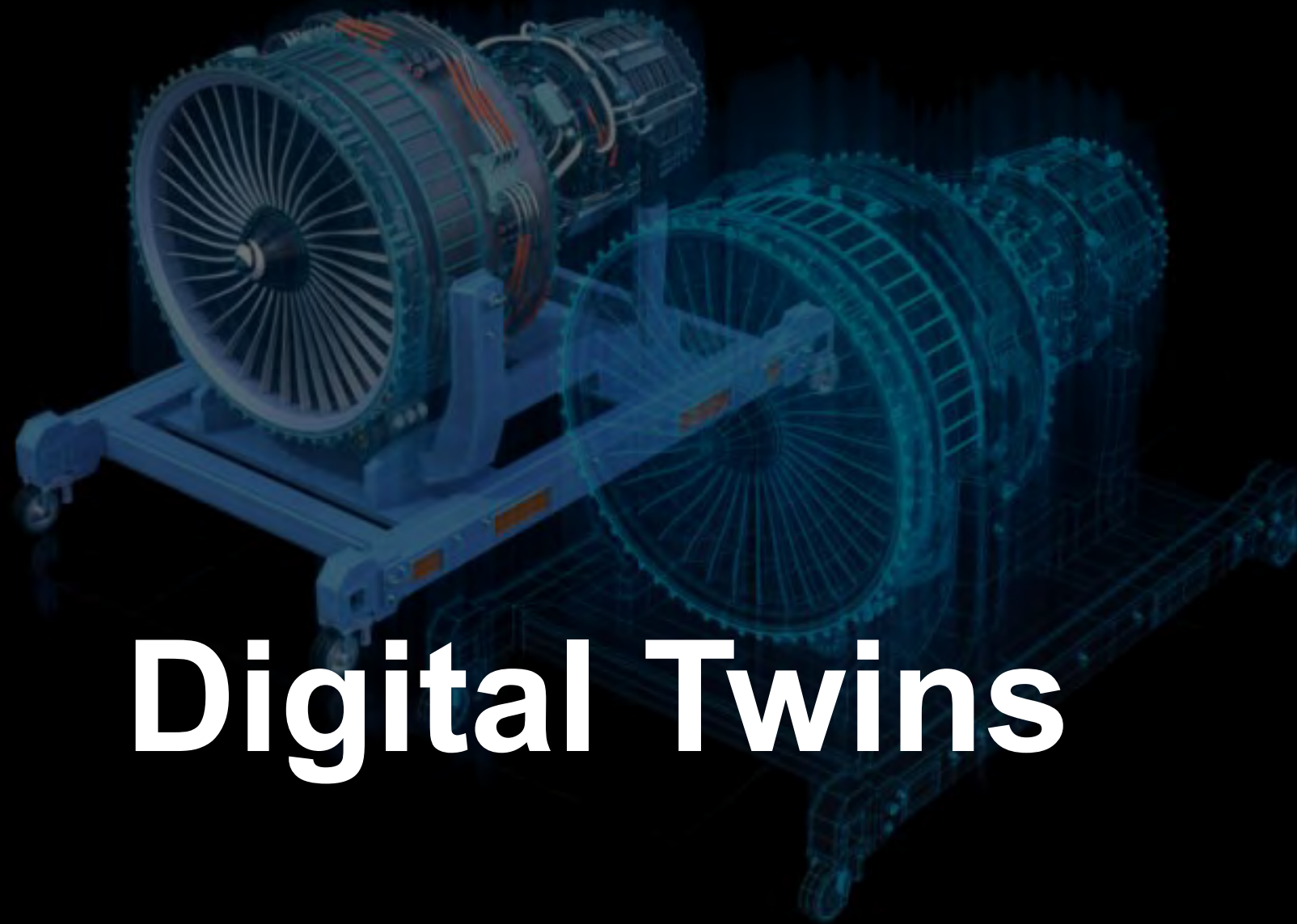






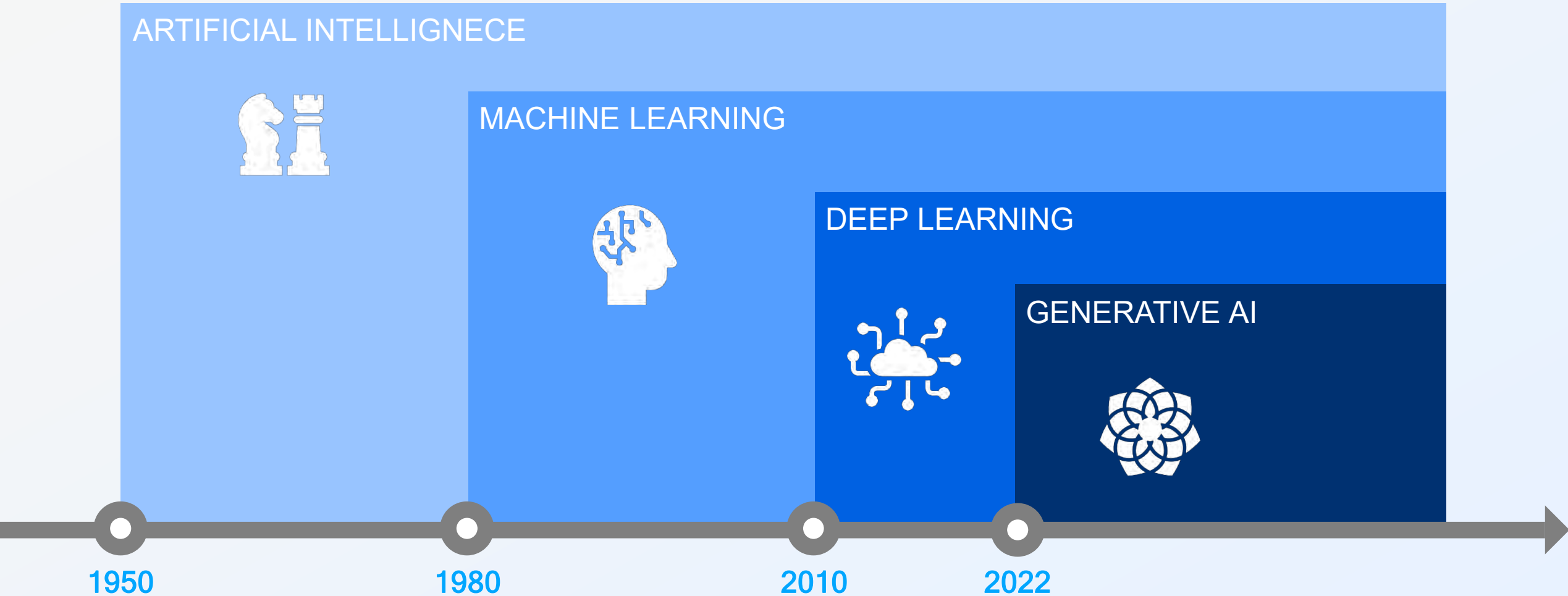


Collect and store data so that
connections can be established to better
understand cause and effect.



Digital Twins

Artificial Intelligence: An umbrella for many things.



01.



Labelled Data



Training of a
Machine Learning
model

02.



New Data

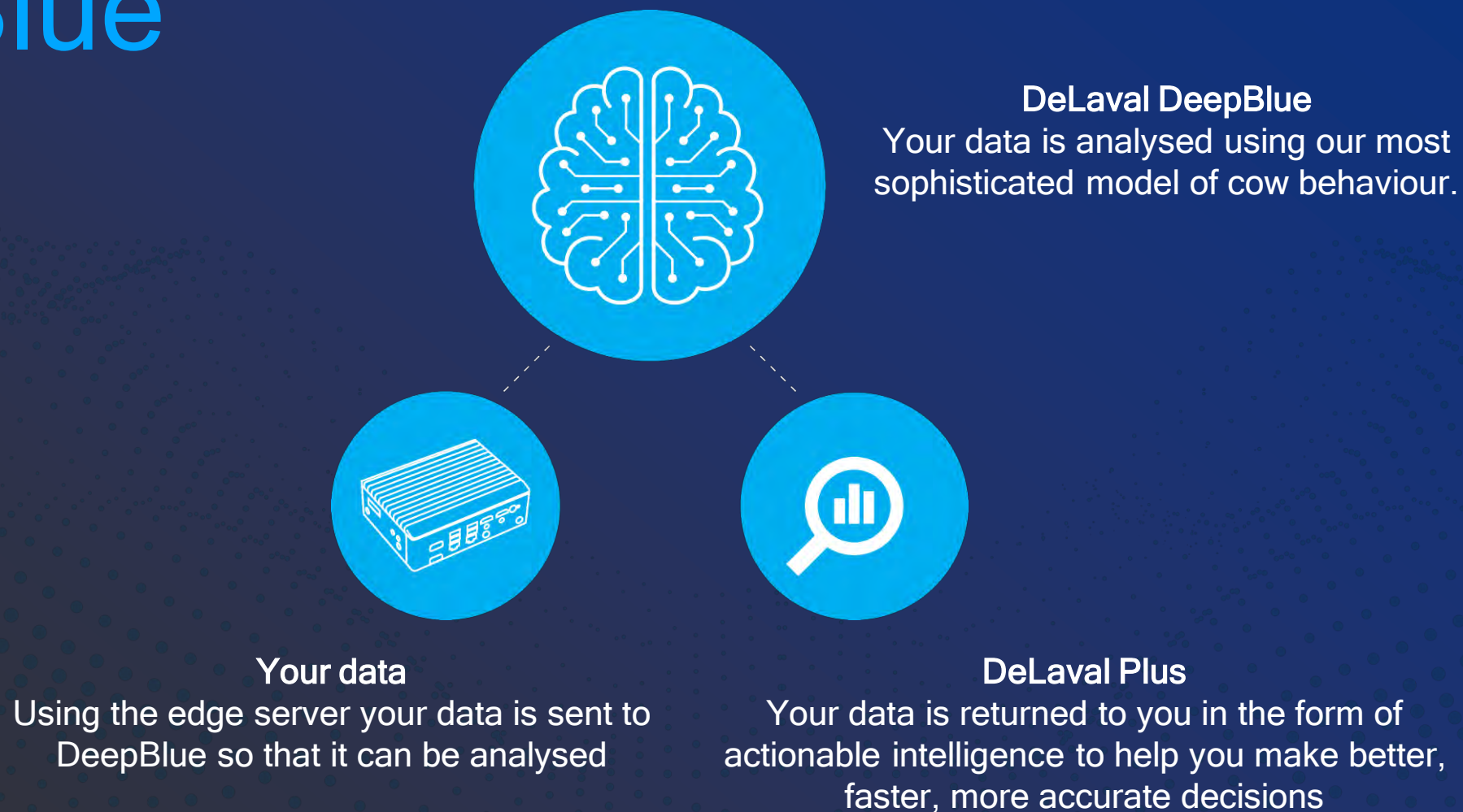


Learnt Models



Early Recognition
(Prediction)

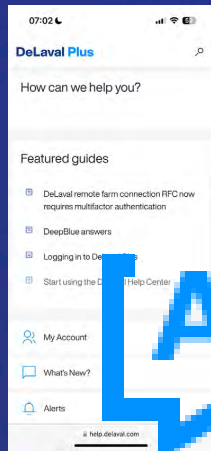
DeLaval DeepBlue



Video: DeepBlue

(Placeholder only)

DeLaval DeepBlue



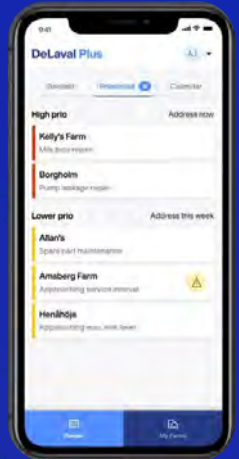
Make it easy to find information

Regenerative AI that responds to questions using help centre material to avoid the need to manually search

Predictive Breakdown

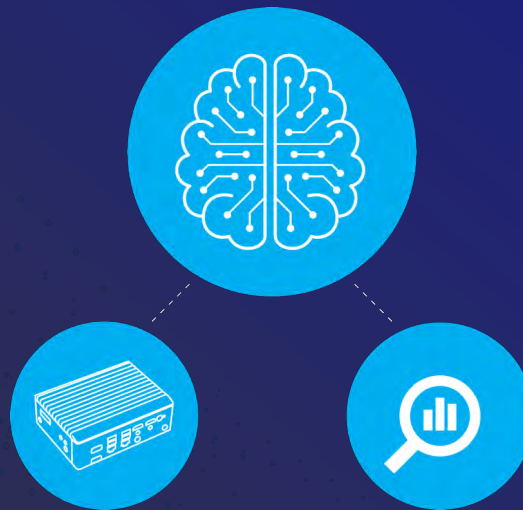
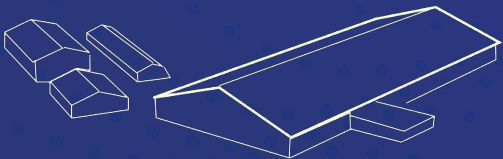
Developing models to proactively identify parts of a farm installation that are likely to need maintenance.

This is something in a very early concept phase and still to be proven.



Improving Performance

Suggesting actions to customers that will help to improve their farm performance. This could include automating routines and standard operating procedures or suggesting management changes to improve milk production efficiency. Reproduction Performance RePro includes a simple version of this.



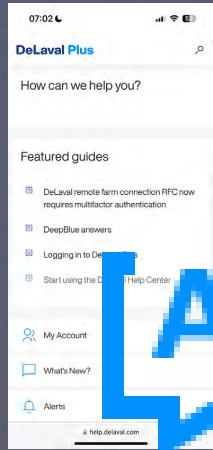
Identify animals that need attention

Heat detection models and models to identify risk of illness and the specific disease

Specifically Disease Risk and Behaviour Analysis



DeLaval DeepBlue



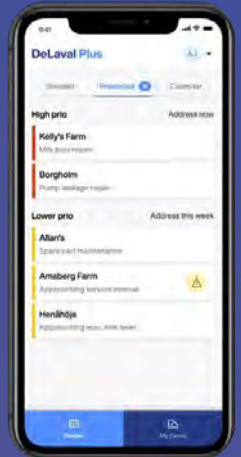
Make it easy to find information

Regenerative AI that responds to questions using help centre material to avoid the need to manually search

Predictive Breakdown

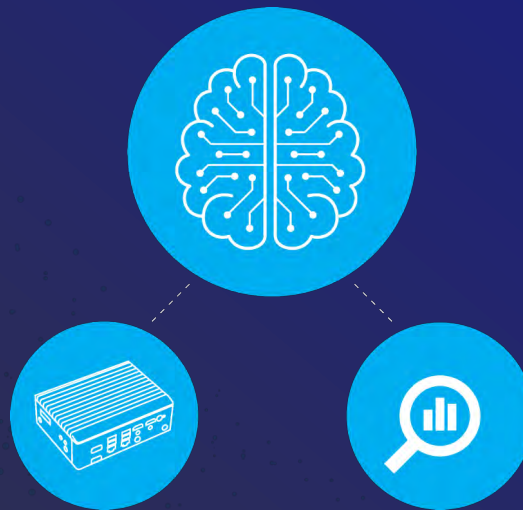
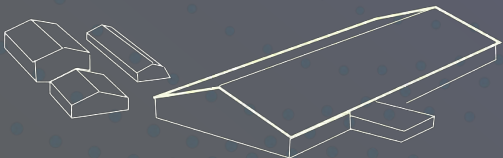
Developing models to proactively identify parts of a farm installation that are likely to need maintenance.

This is something in a very early concept phase and still to be proven.



Improving Performance

Suggesting actions to customers that will help to improve their farm performance. This could include automating routines and standard operating procedures or suggesting management changes to improve milk production efficiency. Reproduction Performance RePro includes a simple version of this.



Identify animals that need attention

Heat detection models and models to identify risk of illness and the specific disease

Specifically Disease Risk and Behaviour Analysis

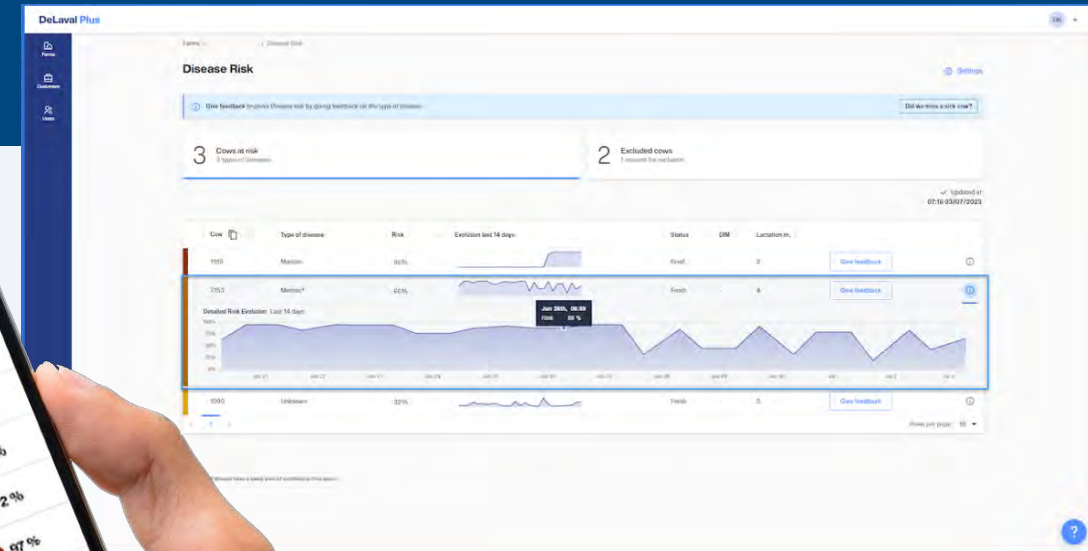


Disease Risk

Quickly find cows at risk of mastitis, ketosis, or other diseases. Prioritise the cows that are in need of your attention.

The solution

- This application helps to identify your sick milking cows daily
- All data from all your DeLaval sensors combined into one prediction gives you valuable insights into the health condition of your cows, such as mastitis or ketosis.
- Update early health risk indicators each morning with a click and plan your workday accordingly
- Our artificial intelligence model, DeLaval DeepBlue, will keep learning and anticipate more disease risks - sooner.

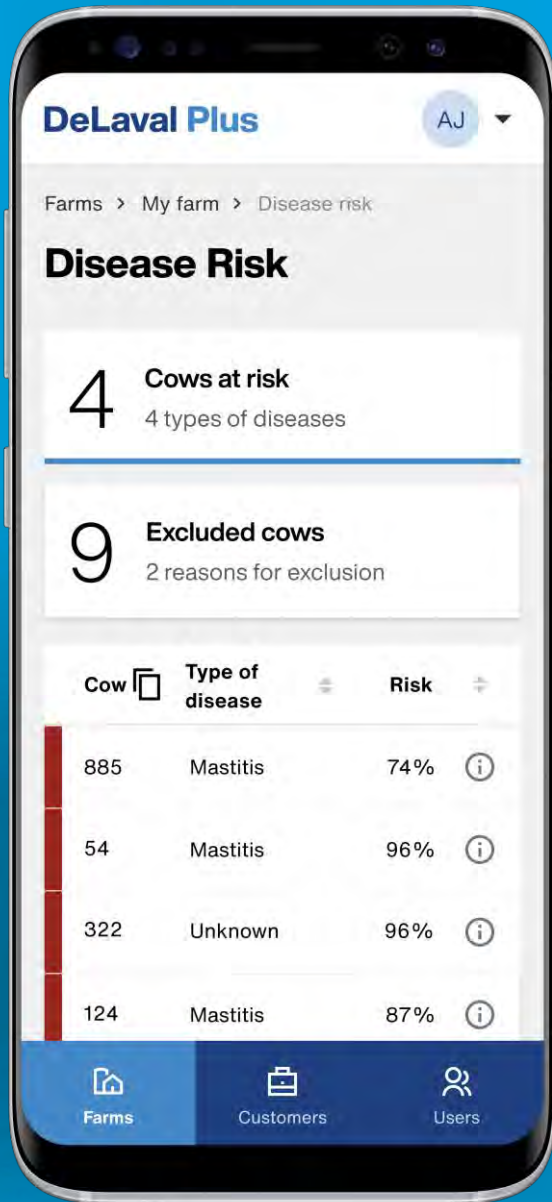


The experience

"We use Disease Risk every day to find sick cows. For finding mastitis it's spot on; we love it!"

- Paul Smith, UK.

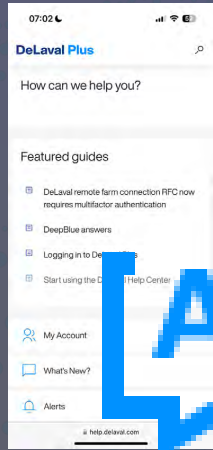
One Better To-Do List



Testimonial Video
(placeholder)



DeLaval DeepBlue



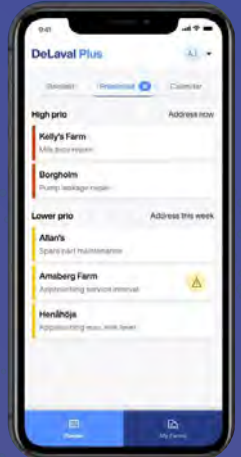
Make it easy to find information

Regenerative AI that responds to questions using help centre material to avoid the need to manually search

Predictive Breakdown

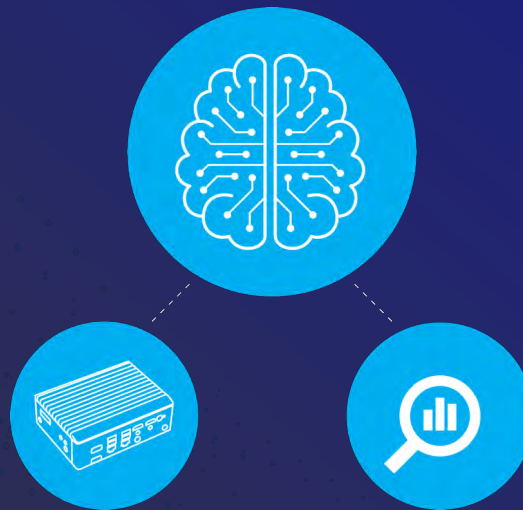
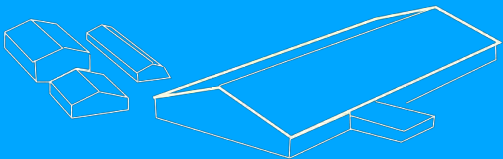
Developing models to proactively identify parts of a farm installation that are likely to need maintenance.

This is something in a very early concept phase and still to be proven.



Improving Performance

Suggesting actions to customers that will help to improve their farm performance. This could include automating routines and standard operating procedures or suggesting management changes to improve milk production efficiency. Reproduction Performance RePro includes a simple version of this.



Identify animals that need attention

Heat detection models and models to identify risk of illness and the specific disease

Specifically Disease Risk and Behaviour Analysis



22 Oct 2025, 12:31

13°C

Condition: **Some Items Require Attention**

Animal Health Monitoring

290 animals, 282 healthy, 8 sick

Animals in heat	<div><div></div></div>	4%
Vaccinated	<div><div></div></div>	95%
Pregnant	<div><div></div></div>	2%
Behaviour anomaly	<div><div></div></div>	11%
Outbreak signal	<div><div></div></div>	1%

Robot Performance Monitoring

4 VMS300, 1 requires attention

VMS Anomalies	<div><div></div></div>	12%
VMS Health	<div><div>1</div><div>2</div><div>3</div><div>4</div></div>	
Alarms	<div><div></div></div>	3%
Next Service	Prediction – in 1m 20d	

Milking Performance Monitoring

4.3t / 24h, 29kg / 24h

Completed Milkings	<div><div></div></div>	87%
Incomplete	<div><div></div></div>	4%
Animals Milked	<div><div></div></div>	79%
Milking Profile	<div><div></div></div>	72%

Equipment Health Monitoring

18 devices, 4 require update

Feeding	<div><div></div></div>	95%
Footbath	<div><div></div></div>	95%
Manure	<div><div></div></div>	74%
Herd Navigator	<div><div></div></div>	55%



Next Best Action Tasklist

- Upgrade Firmware of 4 devices
- Reduce Temperature to increase milk yield
- Schedule equipment service: Herd Navigator
- Inspect Gripper Housing on VMS02
- Investigate behaviour of animals ID:12, 64

- 2025-10-22 Vaccinated 34 animals
- 2025-10-22 Record Milk Yield 5.8t / 24h
- 2025-10-22 Cumulative VMS FW 10.4 Update

What's your:

“Next Best Action”



DeLaval **Plus** Analyses

Reproduction Performance RePro

If you milk with VMS™ V310 this application incorporates the recorded progesterone data to give you the most detailed analysis of reproduction performance we have ever delivered.

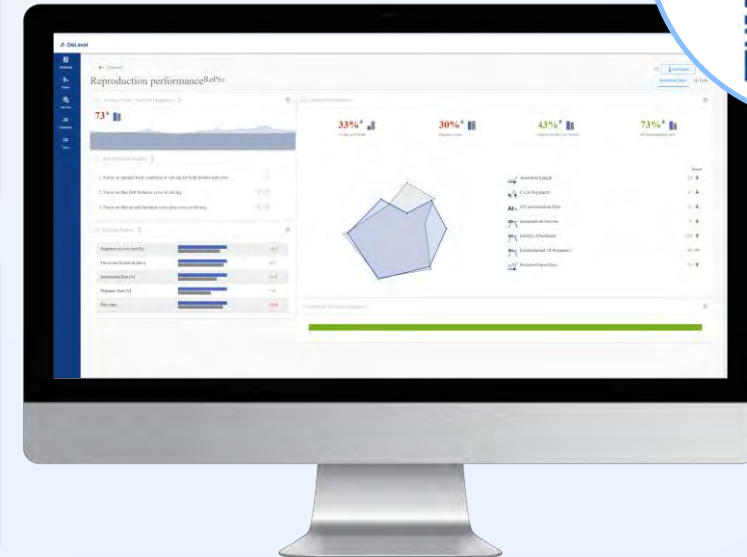
The Challenge

- Do you know which cows cost the most to get pregnant?
- Are you getting the most out of your ability to record progesterone?
- Can you compare your performance with similar farms?

The Solution

- Guided insights that support you on how to make changes in your management to improve your performance.
- Compare your performance with a benchmark group of farmers or your own historical performance.

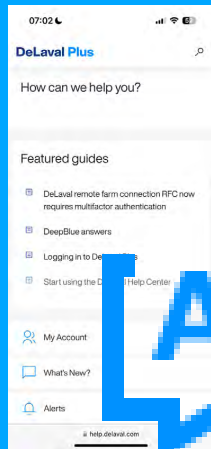
SEE HOW IT WORKS



The experience

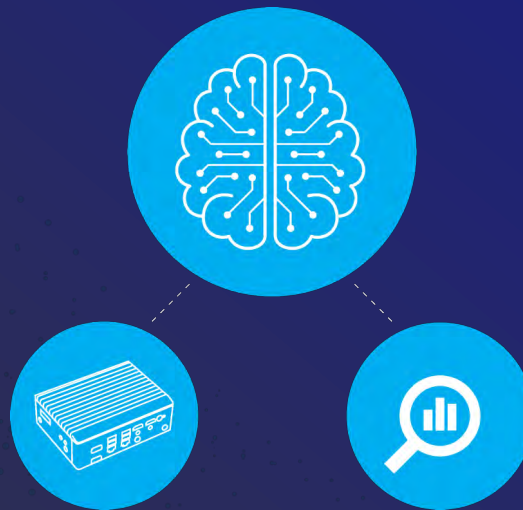
“Reproduction Performance RePro gives me very detailed reproduction insights, and it’s in real-time! My actions are now determined by the data I got, triggering me to improve.” - Geurt Kets, The Netherlands.

DeLaval DeepBlue



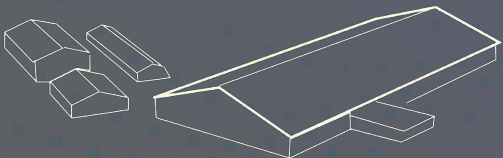
Make it easy to find information

Regenerative AI that responds to questions using help centre material to avoid the need to manually search



Improving Performance

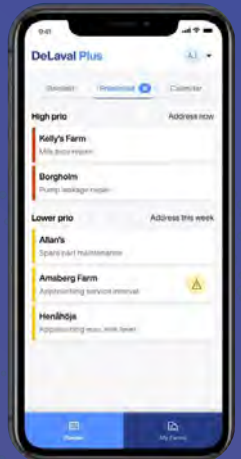
Suggesting actions to customers that will help to improve their farm performance. This could include automating routines and standard operating procedures or suggesting management changes to improve milk production efficiency. Reproduction Performance RePro includes a simple version of this.



Predictive Breakdown

Developing models to proactively identify parts of a farm installation that are likely to need maintenance.

This is something in a very early concept phase and still to be proven.



Identify animals that need attention

Heat detection models and models to identify risk of illness and the specific disease

Specifically Disease Risk and Behaviour Analysis



DeepBlue Assistance

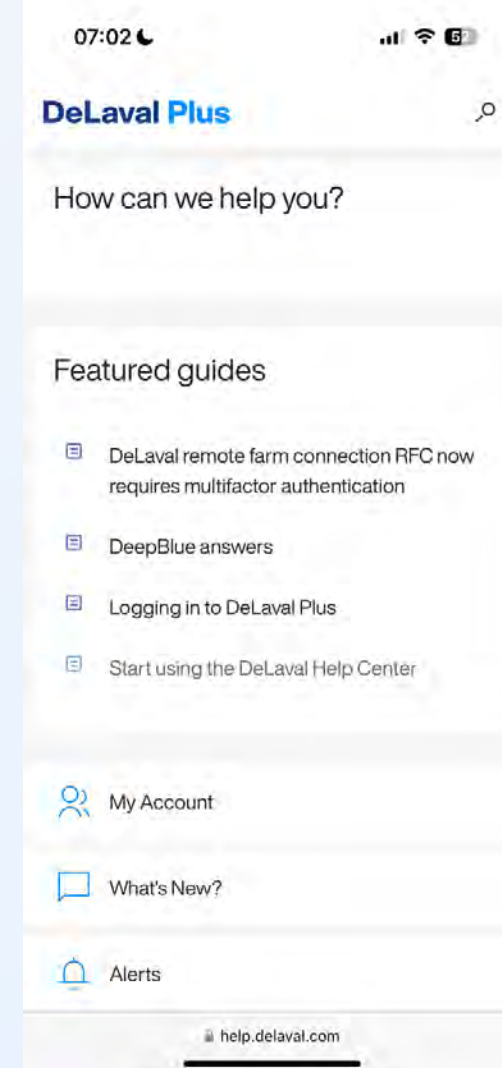
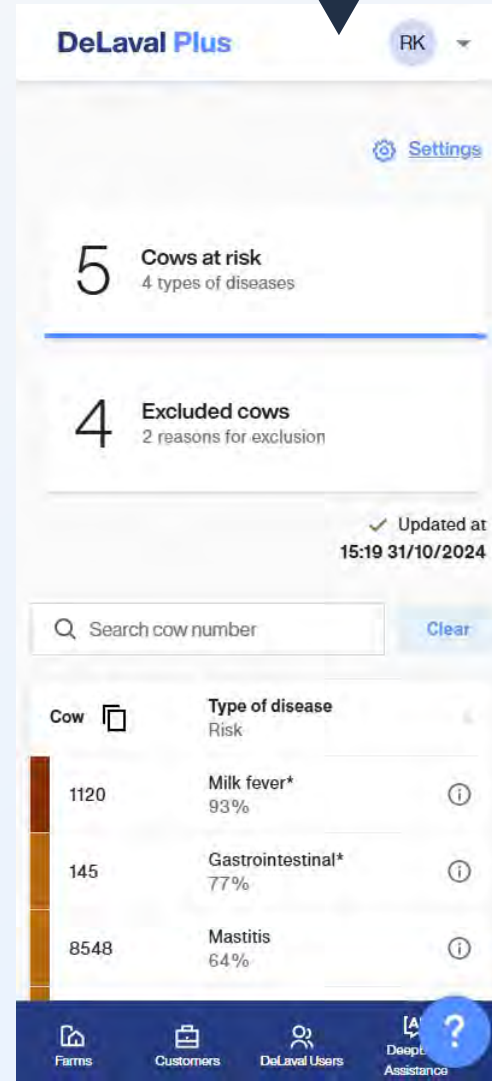


Animation
(placeholder)

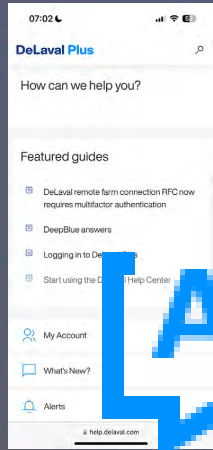


You have access to our Help Centre which features a library of tutorials and user guides to help you get the most out of your DeLaval Plus.

Full Support



DeLaval DeepBlue



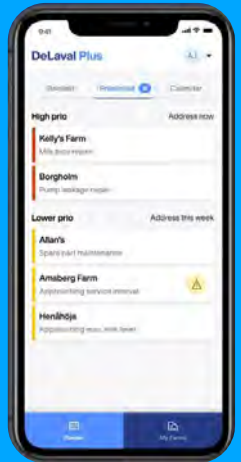
Make it easy to find information

Regenerative AI that responds to questions using help centre material to avoid the need to manually search

Predictive Breakdown

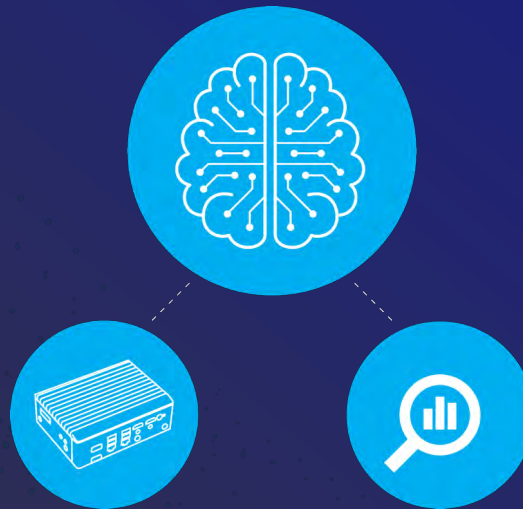
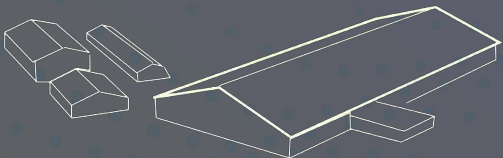
Developing models to proactively identify parts of a farm installation that are likely to need maintenance.

This is something in a very early concept phase and still to be proven.



Improving Performance

Suggesting actions to customers that will help to improve their farm performance. This could include automating routines and standard operating procedures or suggesting management changes to improve milk production efficiency. Reproduction Performance RePro includes a simple version of this.



Identify animals that need attention

Heat detection models and models to identify risk of illness and the specific disease

Specifically Disease Risk and Behaviour Analysis





This is still only the beginning.



A large group of approximately 20 people, including men, women, and children, are posed for a group photo in a dairy farm setting. They are standing in a dirt aisle between rows of metal stalls. Several black and white cows are visible in the stalls behind them. The entire image has a blue color overlay. The text 'The Team Around the Farm' is centered over the group in a large, white, sans-serif font.

The Team Around the Farm

We make
sustainable
food production
possible

